

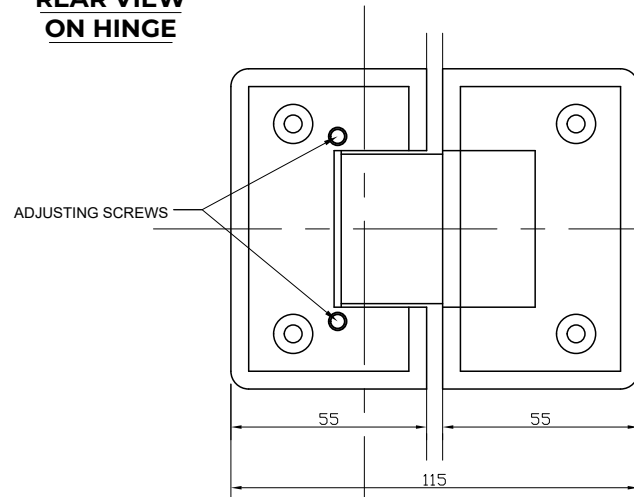


Express Toughening, 51-55 Fowler Road, Hainault, Essex, IG6 3UT

Tel: +44 (0)20 8500 1188
 info@expresstoughening.com
 www.expresstoughening.com

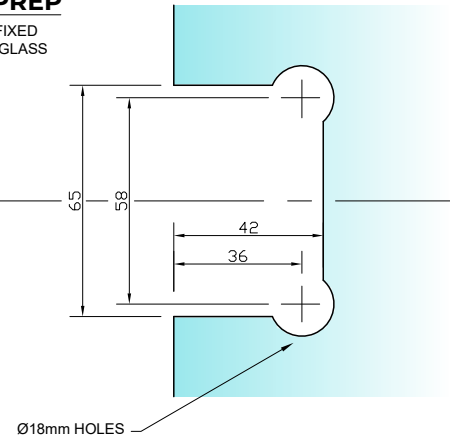
Copyright (C) - October 2020, All Rights Reserved

**REAR VIEW
ON HINGE**

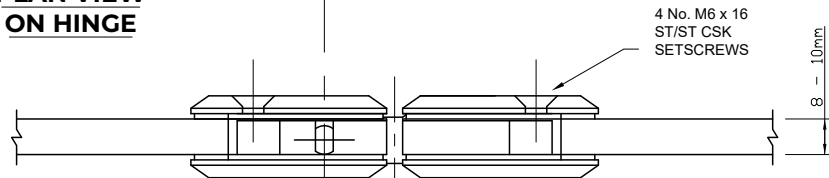


**REQUIRED
GLASS PREP**

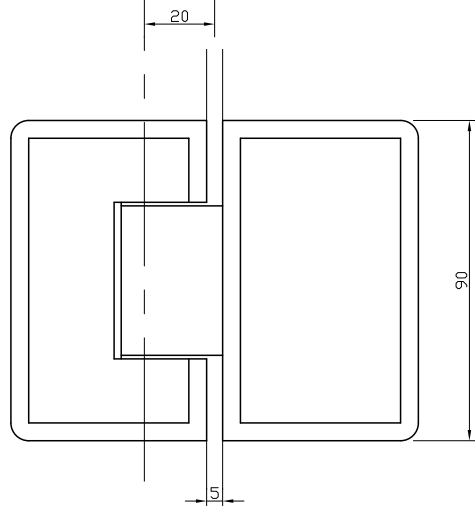
TO BOTH FIXED
AND DOOR GLASS



**PLAN VIEW
ON HINGE**



**FRONT VIEW
ON HINGE**



(5mm GLASS TO GLASS GAP REQ.)

NOTES/SPECIFICATION:

ALL HINGE COMPONENTS IN BRUSHED SATIN NICKEL PLATED BRASS.

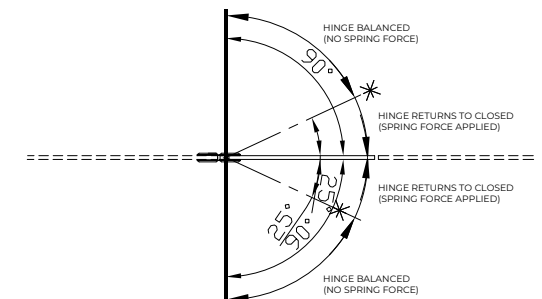
PRODUCT SUITABLE FOR 8 TO 10mm TOUGHENED GLASS PANES.

HINGE SUPPLIED COMPLETE WITH:-

- 1) 2 No. x 1.7mm TRANSLUCENT RUBBER GLAZING WASHERS.
- 2) 2 No. x 1.1mm TRANSLUCENT RUBBER GLAZING WASHERS
- 3) 2 No. M6 x 16mm ST/ST HEX SOCKET HEAD CSK SETSCREWS
- 4) 2 No. HEX SOCKET ALLEN KEYS TO SUIT

ADJUSTABLE CENTRE POINT TO ALIGN WITH JAMB PANEL.

(NOTE CUSTOMER TO PROVIDE ALTERNATIVE FIXINGS WHERE REQUIRED)



PRODUCT REF: SH/APH/H02_S

DESCRIPTION: DIMENSIONED ELEVATIONS AND GLASS PREP DETAILS

DRAWING REF: SH/APH/H02_S - 001A