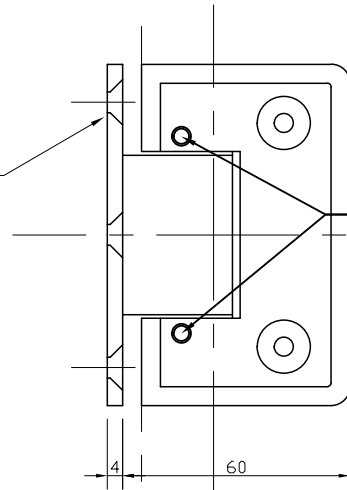
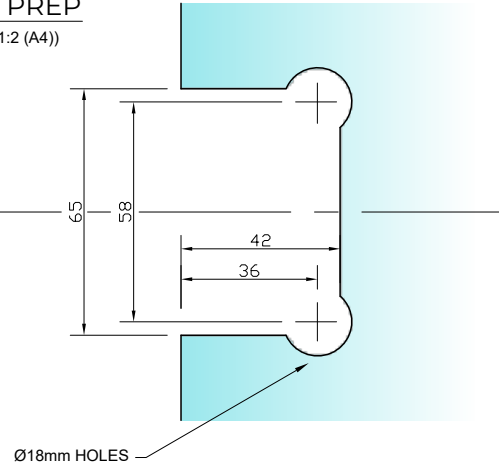


**REAR VIEW
ON HINGE**
(SCALE 1:2 (A4))

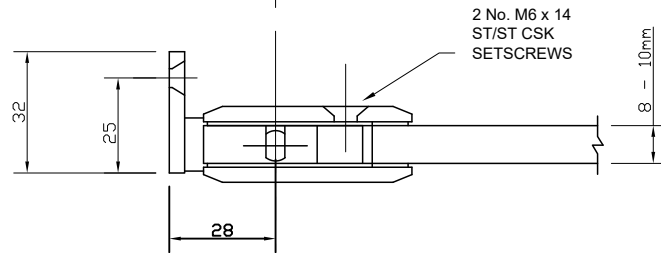
3 No. Ø5.5 HOLES
CSK TO SUIT
No. 10 SCREWS.



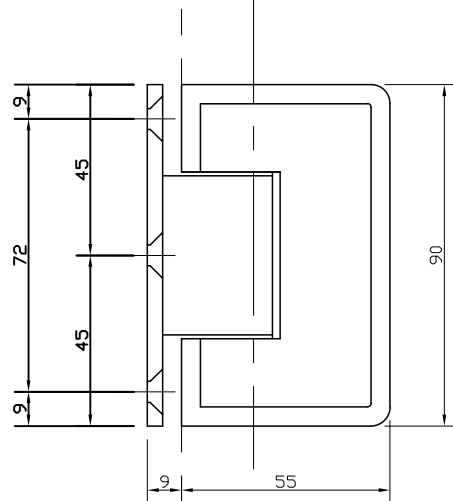
**REQUIRED
GLASS PREP**
(SCALE 1:2 (A4))



**PLAN VIEW
ON HINGE**
(SCALE 1:2 (A4))

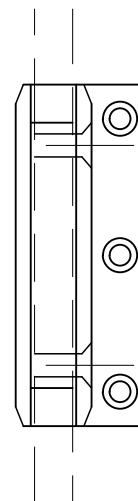


**FRONT VIEW
ON HINGE**
(SCALE 1:2 (A4))



(9mm GLASS GAP REQ.)

**SIDE VIEW
ON HINGE**
(SCALE 1:2 (A4))



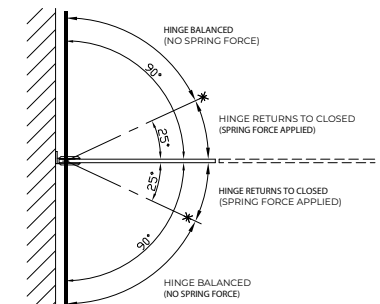
Express Toughening, 51-55 Fowler Road, Hainault, Essex, IG6 3UT

Tel: +44 (0)20 8500 1188
info@expresstoughening.com
www.expresstoughening.com

Copyright (C) - October 2020, All Rights Reserved

NOTES/SPECIFICATION:

- ALL HINGE COMPONENTS IN CHROME PLATED BRASS.
- PRODUCT SUITABLE FOR 8 TO 10mm TOUGHENED GLASS PANES.
- HINGE SUPPLIED COMPLETE WITH:-
- 1) 2 No. x 1.7mm TRANSLUCENT RUBBER GLAZING WASHERS.
- 2) 2 No. x 1.1mm TRANSLUCENT RUBBER GLAZING WASHERS
- 3) 2 No. M6 x 14mm ST/ST HEX SOCKET HEAD CSK SETSCREWS
- 4) 2 No. HEX SOCKET ALLEN KEYS TO SUIT
- 5) 3 No. 10 x 40mm POSI DRIVE SCREWS AND PLASTIC PLUGS
- ADJUSTABLE CENTRE POINT TO ALIGN WITH JAMB PANEL.
- (NOTE CUSTOMER TO PROVIDE ALTERNATIVE FIXINGS WHERE REQUIRED)



PRODUCT REF:	SH/APH/H01_AD
DESCRIPTION:	DIMENSIONED ELEVATIONS AND REQUIRED GLASS PREP DETAIL * *
DRAWING REF:	SH/APH/H01_AD - 001C