



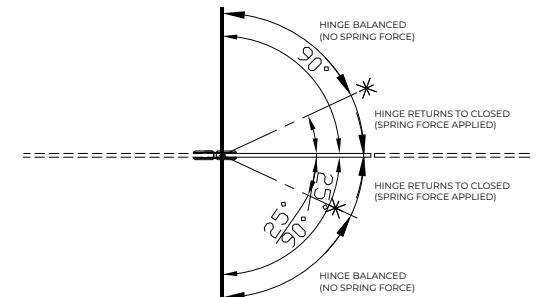
Express Toughening, 51-55 Fowler Road, Hainault, Essex, IG6 3UT

Tel: +44 (0)20 8500 1188  
 info@expresstoughening.com  
 www.expresstoughening.com

Copyright (C) - October 2020, All Rights Reserved

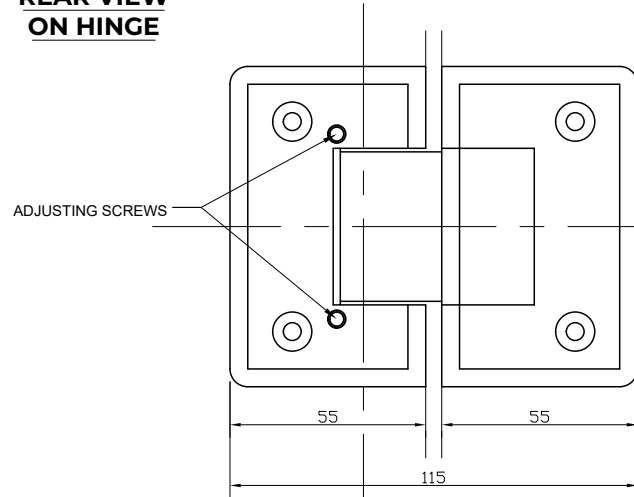
**NOTES/SPECIFICATION:**

ALL HINGE COMPONENTS IN SATIN NICKEL PLATED BRASS.  
 PRODUCT SUITABLE FOR 8 TO 10mm TOUGHENED GLASS PANES.  
 HINGE SUPPLIED COMPLETE WITH:-  
 1) 2 No. x 1.7mm TRANSLUCENT RUBBER GLAZING WASHERS.  
 2) 2 No. x 1.1mm TRANSLUCENT RUBBER GLAZING WASHERS  
 3) 4 No. M6 x 16mm ST/ST HEX SOCKET HEAD CSK SETSCREWS  
 4) 2 No. HEX SOCKET ALLEN KEYS TO SUIT  
 ADJUSTABLE CENTRE POINT TO ALIGN WITH JAMB PANEL.  
 (NOTE CUSTOMER TO PROVIDE ALTERNATIVE FIXINGS WHERE REQUIRED)



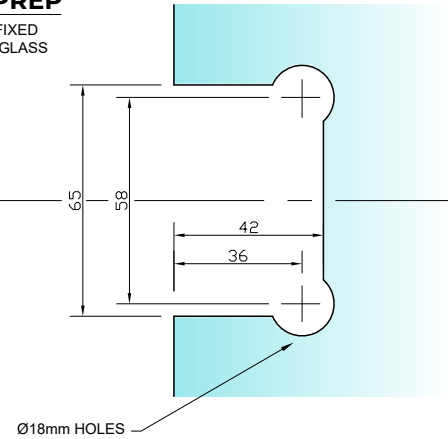
|                     |   |
|---------------------|---|
| <b>PRODUCT REF:</b> | <b>SH/APH/H02_AD</b>                          |
| <b>DESCRIPTION:</b> | DIMENSIONED ELEVATIONS AND GLASS PREP DETAILS |
| <b>DRAWING REF:</b> | <b>SH/APH/H02_AD - 001A</b>                   |

**REAR VIEW ON HINGE**

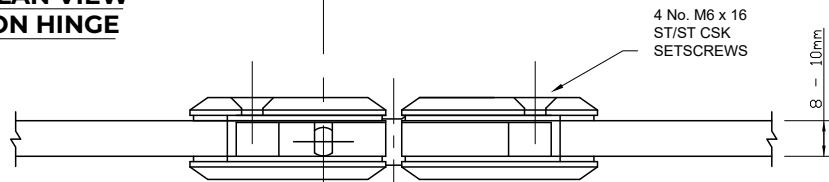


**REQUIRED GLASS PREP**

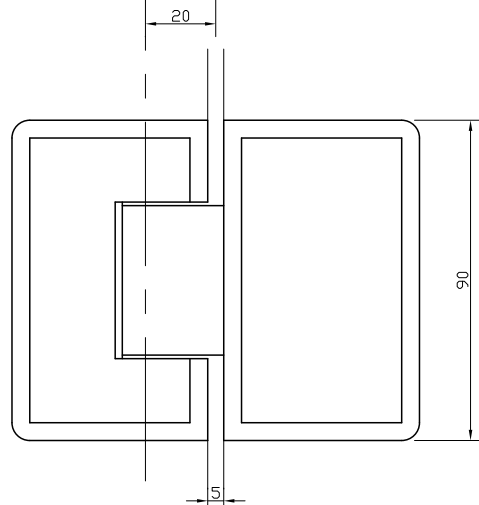
TO BOTH FIXED AND DOOR GLASS



**PLAN VIEW ON HINGE**



**FRONT VIEW ON HINGE**



(5mm GLASS TO GLASS GAP REQ.)