



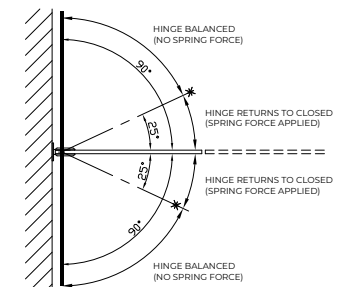
Express Toughening, 51-55 Fowler Road, Hainault, Essex, IG6 3UT

Tel: +44 (0)20 8500 1188
 info@expresstoughening.com
 www.expresstoughening.com

Copyright (C) - October 2020, All Rights Reserved

NOTES/SPECIFICATION:

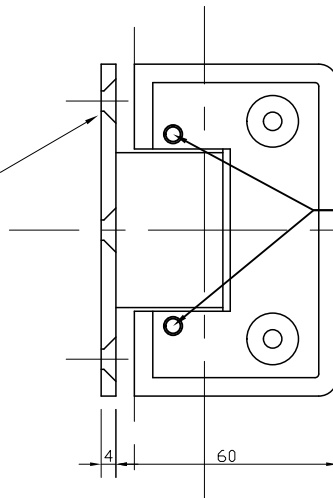
- ALL HINGE COMPONENTS IN SATIN NICKEL PLATED BRASS.
- PRODUCT SUITABLE FOR 8 TO 10mm TOUGHENED GLASS PANES.
- HINGE SUPPLIED COMPLETE WITH:-
- 1) 2 No. x 1.7mm TRANSLUCENT RUBBER GLAZING WASHERS.
 - 2) 2 No. x 1.1mm TRANSLUCENT RUBBER GLAZING WASHERS
 - 3) 2 No. M6 x 14mm ST/ST HEX SOCKET HEAD CSK SETSCREWS
 - 4) 2 No. HEX SOCKET ALLEN KEYS TO SUIT
 - 5) 3 No. 10 x 40mm POSI DRIVE SCREWS AND PLASTIC PLUGS
- ADJUSTABLE CENTRE POINT TO ALIGN WITH JAMB PANEL.
- (NOTE CUSTOMER TO PROVIDE ALTERNATIVE FIXINGS WHERE REQUIRED)



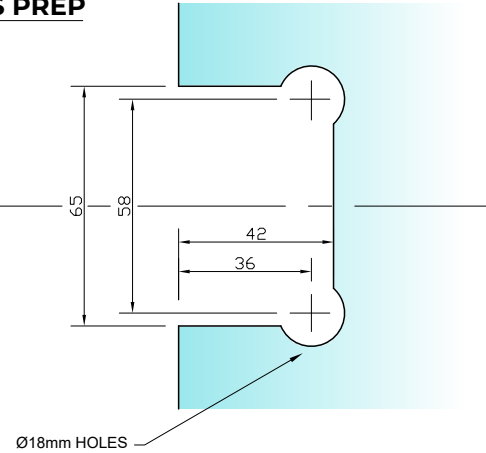
PRODUCT REF:	SH/APH/H01_S
DESCRIPTION:	DIMENSIONED ELEVATIONS AND GLASS PREP DETAILS
DRAWING REF:	SH/APH/H01_S - 001D

REAR VIEW ON HINGE

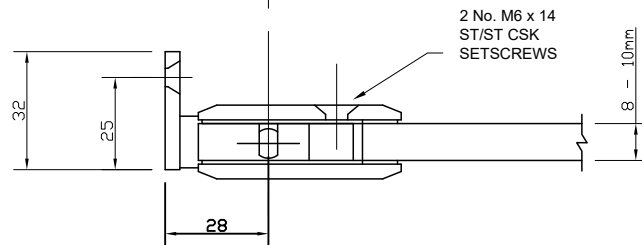
3 No. Ø5.5 HOLES CSK TO SUIT No. 10 SCREWS.



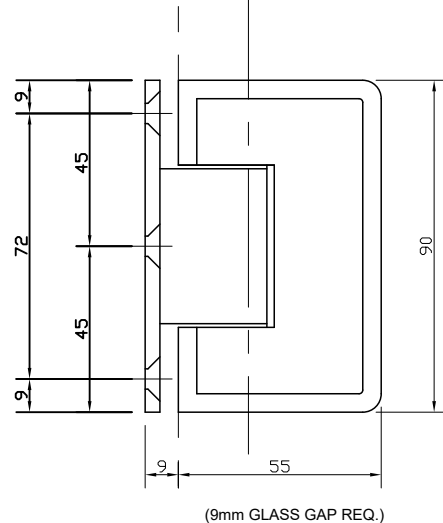
REQUIRED GLASS PREP



PLAN VIEW ON HINGE



FRONT VIEW ON HINGE



(9mm GLASS GAP REQ.)

SIDE VIEW ON HINGE

