



Express Toughening, 51-55 Fowler Road, Hainault, Essex, IG6 3UT

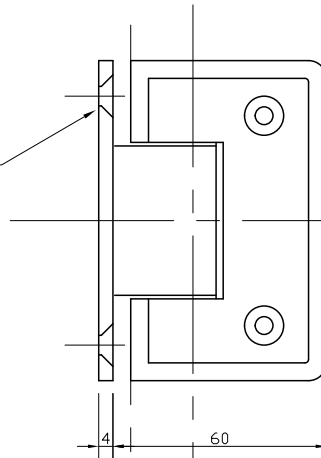
Tel: +44 (0)20 8500 1188  
 info@expresstoughening.com  
 www.expresstoughening.com

Copyright (C) - October 2020, All Rights Reserved

**REAR VIEW ON HINGE**

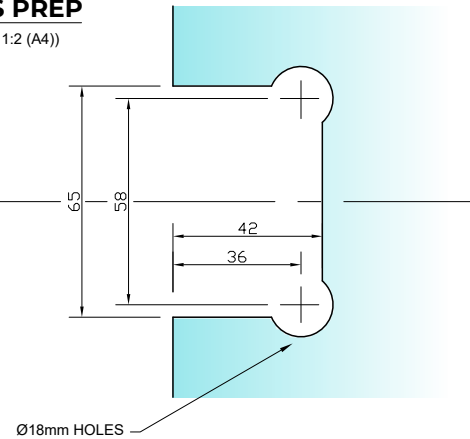
(SCALE 1:2 (A4))

4 No. Ø5.5 HOLES  
 CSK TO SUIT  
 No. 10 SCREWS.



**REQUIRED GLASS PREP**

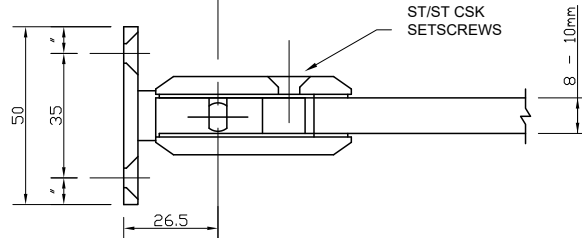
(SCALE 1:2 (A4))



**PLAN VIEW ON HINGE**

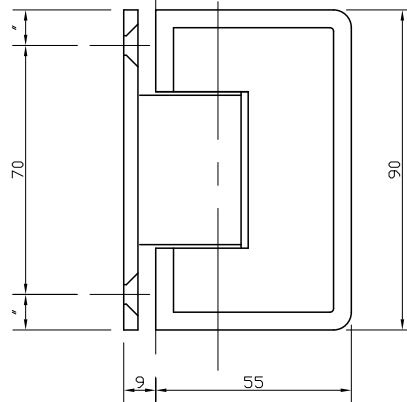
(SCALE 1:2 (A4))

2 No. M6 x 16  
 ST/ST CSK  
 SETSCREWS



**FRONT VIEW ON HINGE**

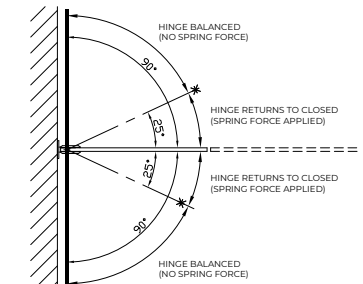
(SCALE 1:2 (A4))



(9mm GLASS GAP REQ.)

**NOTES/SPECIFICATION:**

- ALL HINGE COMPONENTS IN CHROME PLATED BRASS.
  - PRODUCT SUITABLE FOR 8 TO 10mm TOUGHENED GLASS PANES.
  - HINGE SUPPLIED COMPLETE WITH:-
  - 1) 2 No. x 1.7mm TRANSLUCENT RUBBER GLAZING WASHERS.
  - 2) 2 No. x 1.1mm TRANSLUCENT RUBBER GLAZING WASHERS
  - 3) 2 No. M6 x 16mm ST/ST HEX SOCKET HEAD CSK SETSCREWS
  - 4) 2 No. HEX SOCKET ALLEN KEYS TO SUIT
  - 5) 4 No. 10 x 40mm POSI DRIVE SCREWS AND PLASTIC PLUGS
- (NOTE CUSTOMER TO PROVIDE ALTERNATIVE FIXINGS WHERE REQUIRED)



<b>PRODUCT REF:</b>	<b>SH/APH/H03</b>
<b>DESCRIPTION:</b>	DIMENSIONED ELEVATIONS AND GLASS PREP DETAILS
<b>DRAWING REF:</b>	<b>SH/APH/H03 - 001A</b>