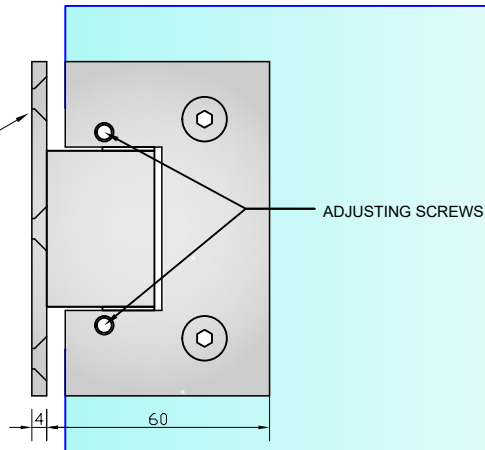


**REAR VIEW  
ON HINGE**

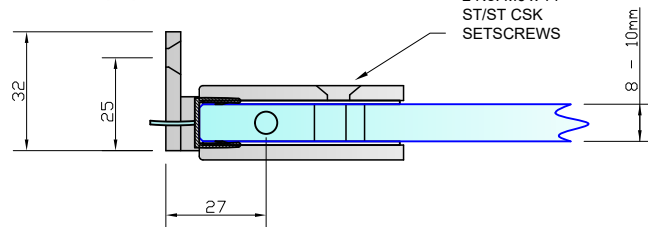
3 No. Ø5.5 HOLES  
CSK TO SUIT  
No. 10 SCREWS.



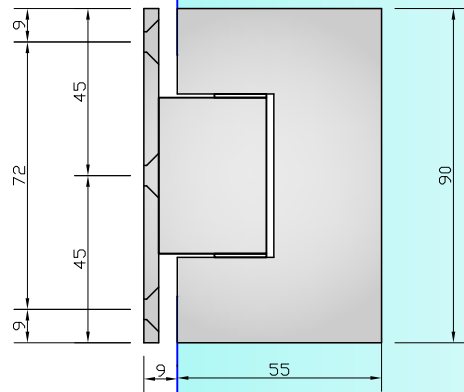
**PLAN VIEW  
ON HINGE**

Seal shown is SH/GGA/S06 (/10)

2 No. M6 x 14  
ST/ST CSK  
SETSCREWS

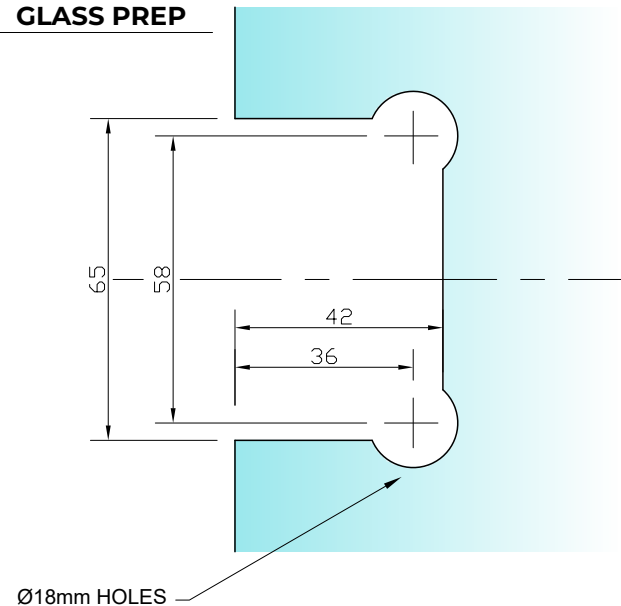


**FRONT VIEW  
ON HINGE**



(9mm GLASS GAP REQ.)

**REQUIRED  
GLASS PREP**



**Express Toughening, 51-55 Fowler Road, Hainault,  
Essex, IG6 3UT**

Tel: +44 (0)20 8500 1188  
info@expresstoughening.com  
www.expresstoughening.com

Copyright (C) - October 2020, All Rights Reserved

**NOTES/SPECIFICATION:**

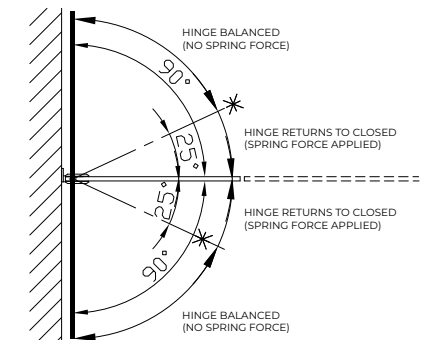
ALL VISIBLE COMPONENTS IN CHROME PLATED BRASS.

PRODUCT SUITABLE FOR 8 TO 10mm TOUGHENED GLASS PANES.

HINGE SUPPLIED COMPLETE WITH:-

- 1) 2no 1.3mm & 2no 0.9mm BLACK RUBBER RUBBER GASKETS
- 2) 2no M6 x 16mm C/SUNK CLAMPING SCREWS
- 2) No. 10 x 50mm SCREWS AND PLASTIC PLUGS

(NOTE CUSTOMER TO PROVIDE ALTERNATIVE FIXINGS WHERE  
REQUIRED)



<b>PRODUCT REF:</b>	<b>SH/NKE/4272</b>
<b>DESCRIPTION:</b>	DIMENSIONED ELEVATIONS AND GLASS PREP DETAILS
<b>DRAWING REF:</b>	<b>SH/NKE/4272 - 001</b>