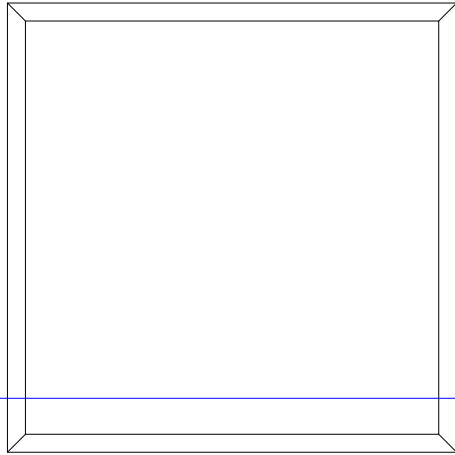
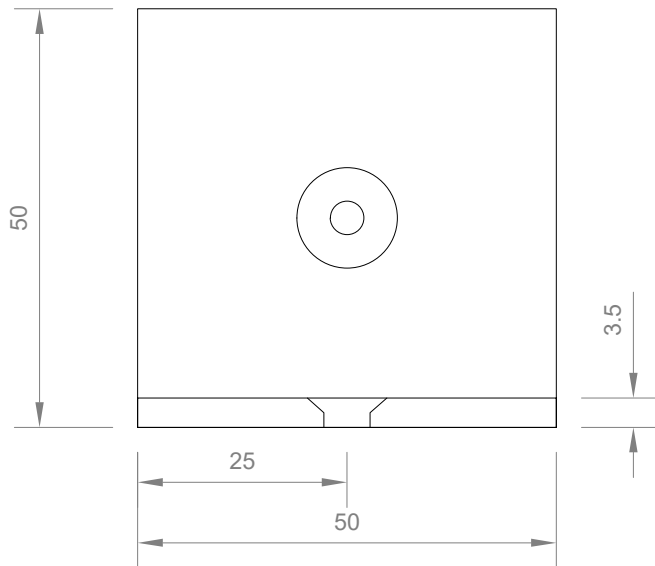


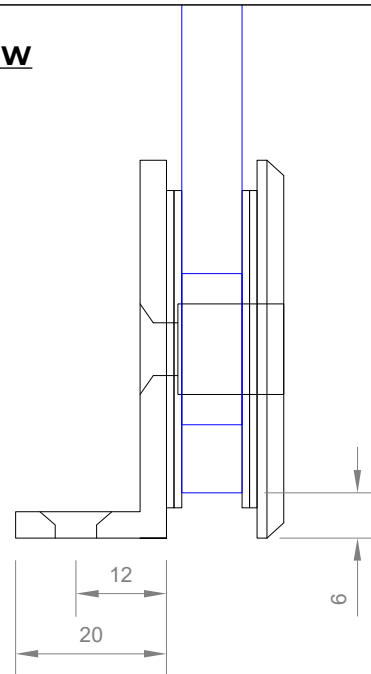
FRONT VIEW



REAR VIEW



SIDE VIEW



Express Toughening, 51-55 Fowler Road, Hainault,
Essex, IG6 3UT

Tel: +44 (0)20 8500 1188
info@expresstoughening.com
www.expresstoughening.com

Copyright (C) - October 2020, All Rights Reserved

NOTES/SPECIFICATION:

ALL FITTING COMPONENTS IN BRUSHED SATIN NICKEL
PLATED BRASS

PRODUCT SUITABLE FOR 8 TO 10mm TOUGHENED GLASS
USED IN WALL, BASE AND TOP POSITIONS WHERE REQUIRED.

FITTING SUPPLIED COMPLETE WITH:-

- 1) 4 No. x 1mm CLEAR PVC WASHERS
- 2) 1 No. M6 x 12mm ST/ST HEX SOCKET MACHINE SCREW
- 3) 1 No. ALLEN KEY TO FIT
- 4) 1 No. 10 x 30mm POSI-DRIVE SCREW AND PLUG.

(NOTE CUSTOMER TO PROVIDE ALTERNATIVE FIXINGS WHERE
REQUIRED)

6mm GLASS TO WALL/FLOOR GAP

PRODUCT REF: SH/APH/B07_S

DESCRIPTION: DIMENSIONED ELEVATIONS AND
REQUIRED GLASS PREP DETAIL

DRAWING REF: SH/APH/B07_S - 001