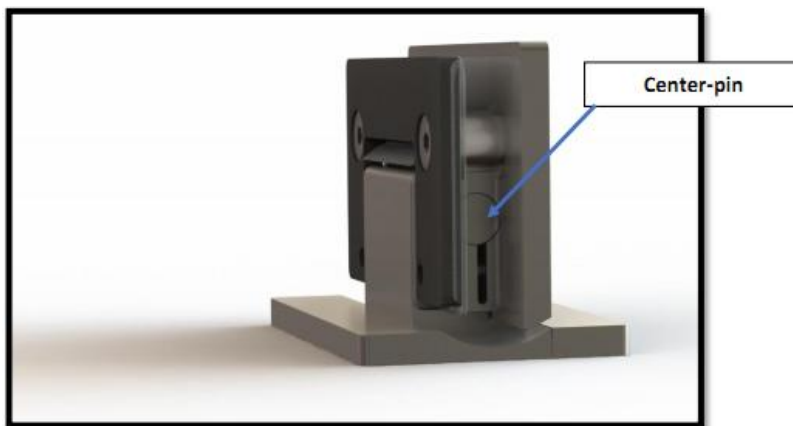
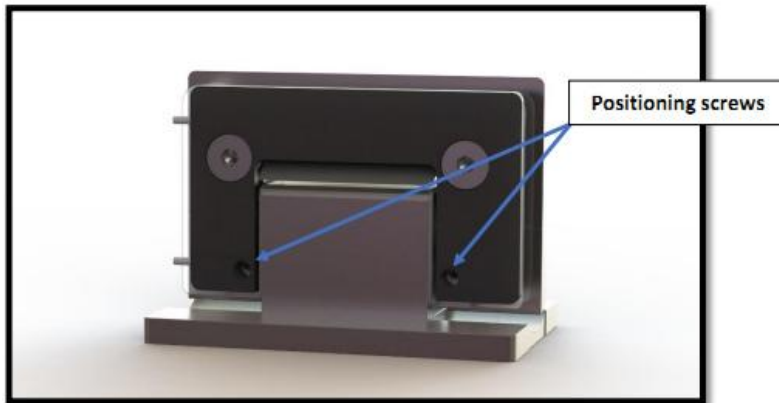


Best Practice and Tips before Installation

1. Open / close the hinge and check the centre-pin does not move with the hinge
2. Make sure the 2 small positioning screws are loose. Tighten only after the door is installed.

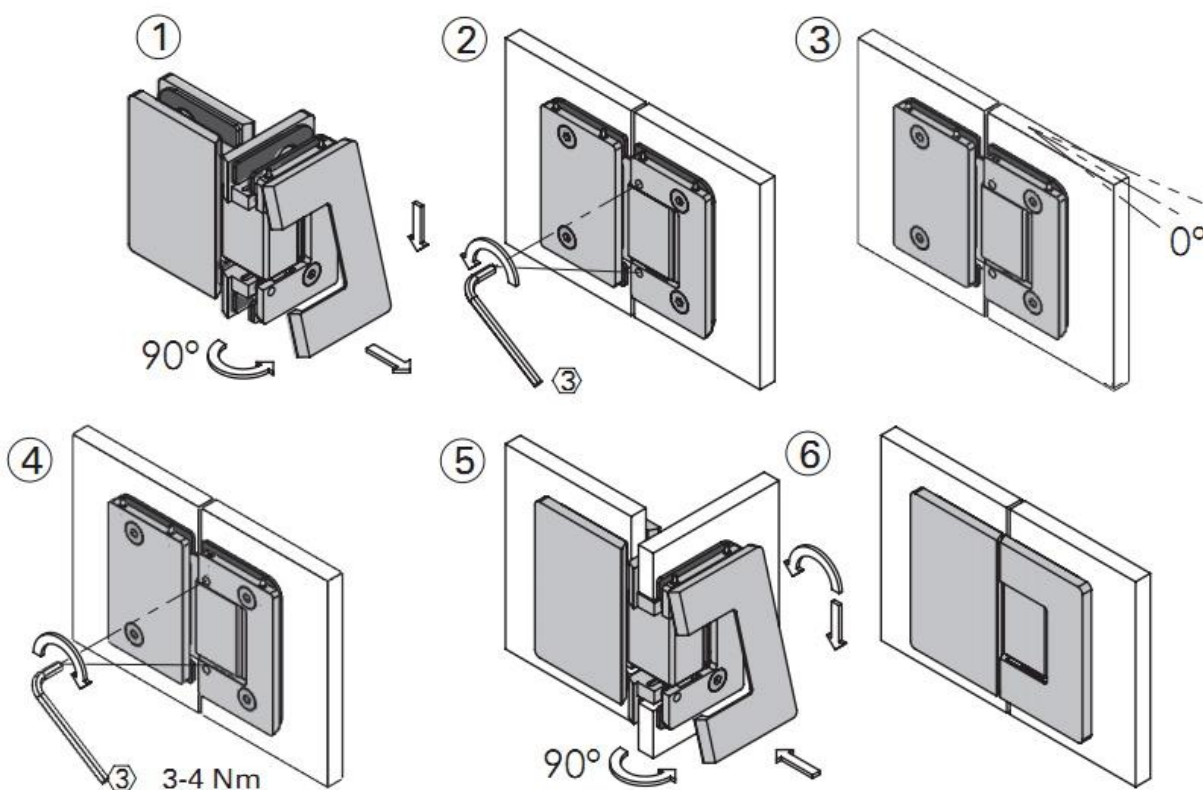
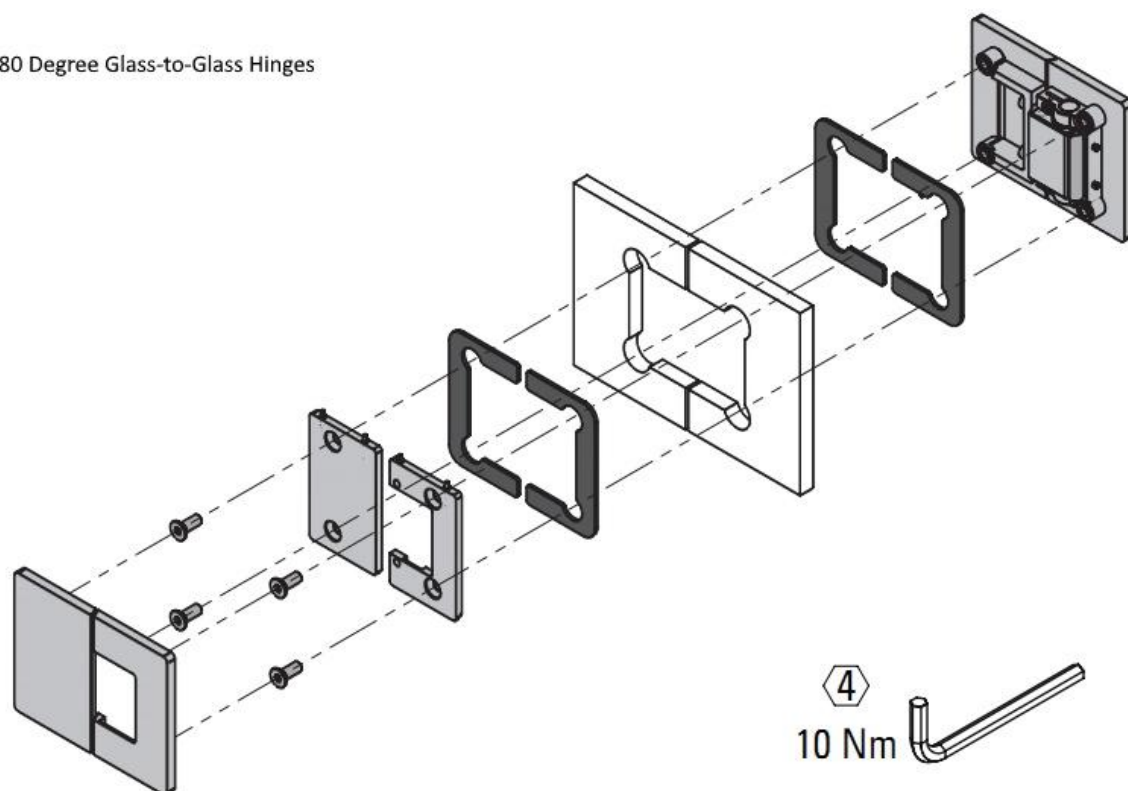


There are four gaskets (as shown in photo above) on each side of the hinge: 2 thinner and 2 thicker.

- For 8mm glass, only use 2x thicker one for the door and 2x thicker one for the fixed panel.
- For 10mm glass, only use 2x thinner one for the door and 2x thinner one for the fixed panel.

Instruction Manual

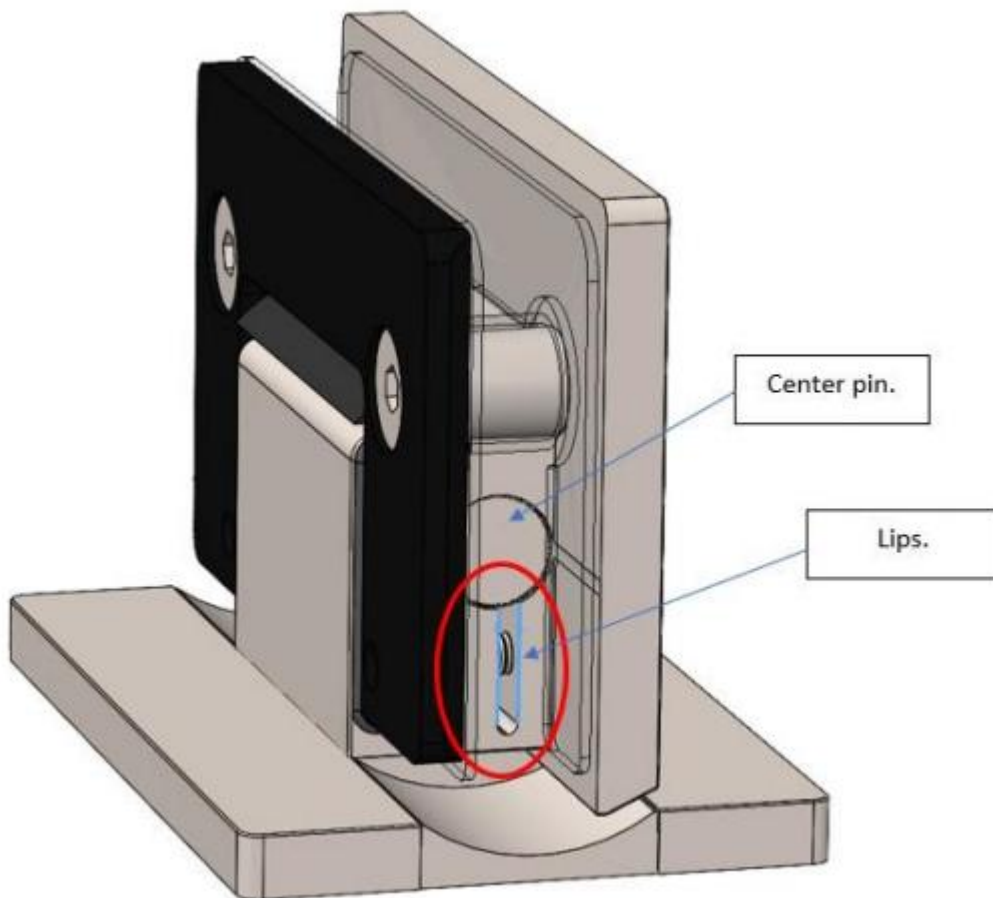
180 Degree Glass-to-Glass Hinges



Unable to find the desired 0° position?

Cause and solution:

Tightening the 2 small 'zero-point adjustment screws' makes a strong and effective hold by deforming the hinge, see below area:



Normally when loosening the small screws, these lip areas lose their grip and hold. But sometimes the areas keep the hold. This means the indicated area (on both sides of the hinge) needs to be spread apart for the center pin to rotate freely.

Easiest way to do this is to...

1. Take off the glass door.
2. Remove both small center hold screws.
3. Find a large flat screwdriver
4. Insert the screwdriver between the lips of the shown area and turn it - thereby increasing the distance between the lips - both sides of the hinge.
5. To make sure all is ok... work the hinge (1 or 2 times) until the center pin stops burning.
Tips: making a marker line on the pin helps to see if it moves.
6. Insert the 2 position hold screws loosely, do not tighten.
7. Hinge is now ready.

Cleaning & Care Instruction

Profiles, fittings and glass panels must only be cleaned with mild household cleaners (no microfibre cloths).

Detergents, abrasive cleaners, alcohol or cellulose thinners are not suitable for this purpose.

The mechanical parts of the shower cubicle also need care to maintain their trouble-free function for many years. Regular

cleaning and maintenance are decisive factors in maximising their lifespan. The older the deposits on material surfaces, the more difficult to remove.

- Clean and dry the surfaces directly after having a shower.
- Use soft, non-abrasive cloths.
- Important: Highly effective, coarse microfibre may damage the surface.
- Non-abrasive, non-film forming standard household detergents or glass cleaners must be used.
- Please always read the instructions for use of the respective detergents.