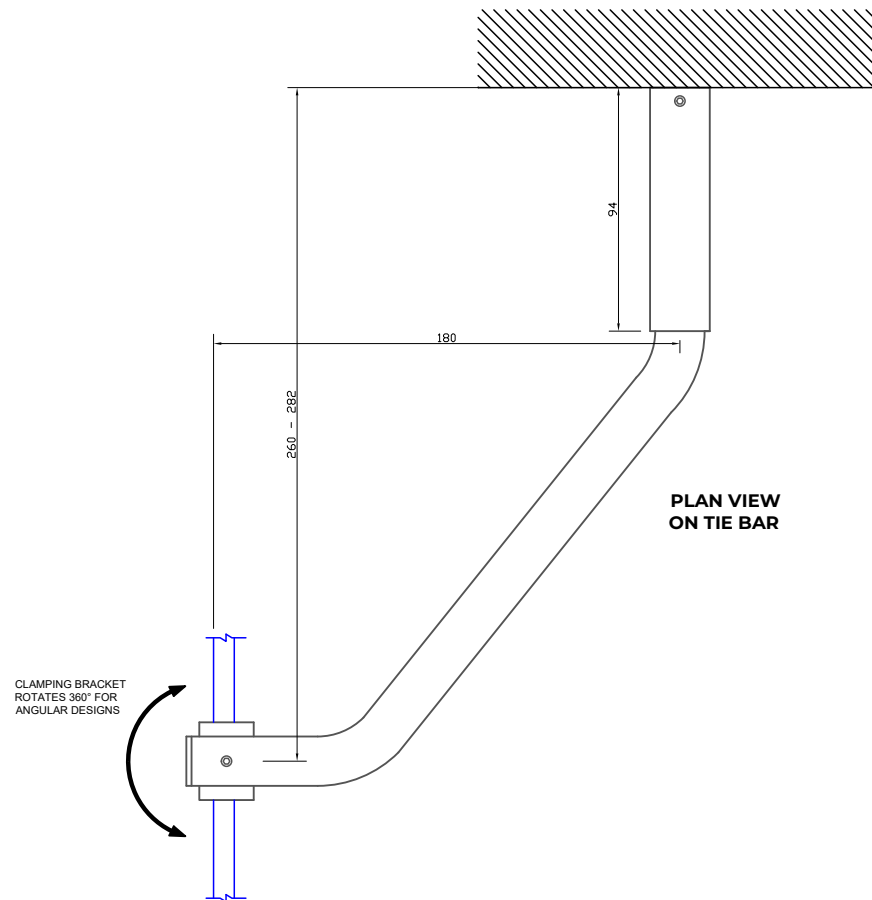




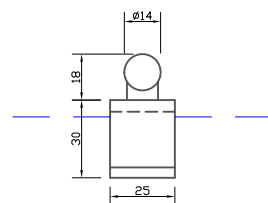
Express Toughening, 51-55 Fowler Road, Hainault,
Essex, IG6 3UT

Tel: +44 (0)20 8500 1188
info@expresstoughening.com
www.expresstoughening.com

Copyright (C) - October 2020, All Rights Reserved

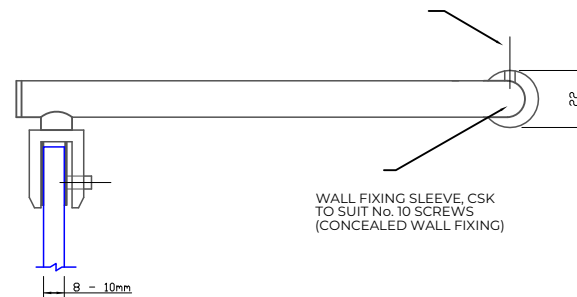


FRONT VIEW ON TIE BAR



3 No. GRUB SCREWS FOR TIE BAR CONNECTION/ADJUSTMENT.

SIDE VIEW ON TIE BAR



NOTES/SPECIFICATION:

ALL TIE BAR COMPONENTS IN CHROME PLATED BRASS.

PRODUCT SUITABLE FOR 8 TO 10mm TOUGHENED GLASS PANES.

TIE BAR SUPPLIED COMPLETE WITH:-

- 1) 2 No. x 1mm TRANSLUCENT CLAMPING WASHERS.
- 2) 3 No. STAINLESS STEEL HEX SOCKET GRUB SCREWS.
- 3) 1 No. FLAT HEAD, RUBBER TIPPED GRUB SCREW.
- 4) 1 No. HEX SOCKET ALLEN KEY TO SUIT
- 5) 1 No. 10 x 40mm POSI DRIVE SCREW AND PLASTIC PLUG

(NOTE CUSTOMER TO PROVIDE ALTERNATIVE FIXINGS WHERE REQUIRED)

PRODUCT REF:	SH/APH/T03_AD
DESCRIPTION:	DIMENSIONED ELEVATIONS AND GLASS PREP DETAILS
DRAWING REF:	SH/APH/T03_AD - 001A